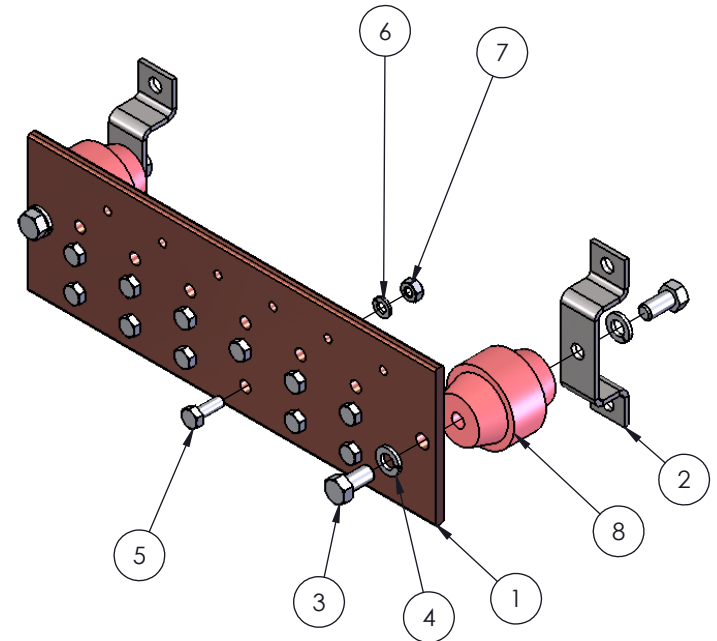
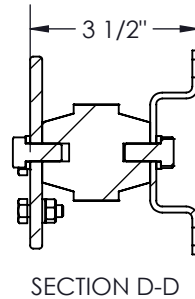
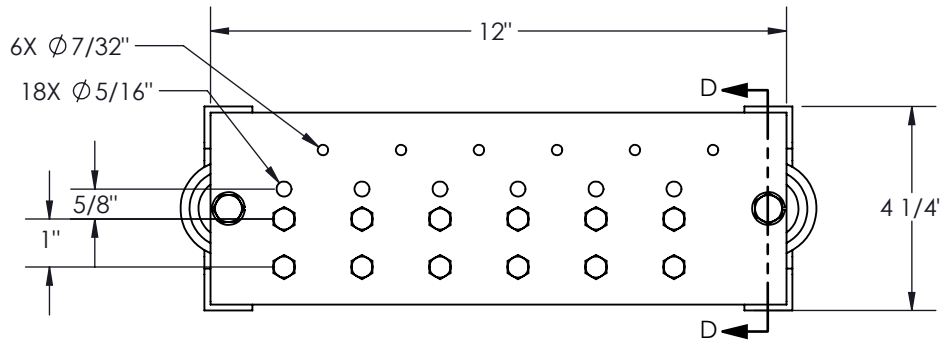
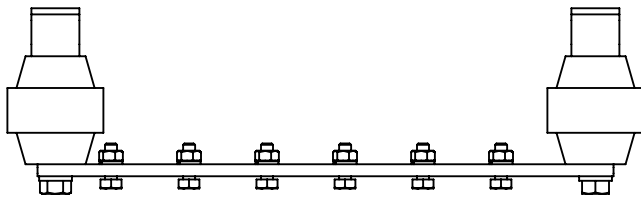


NOTES:

- 1 - TIN COPPER BAR AS PER MIL-C-10727C TY:1
- 2 - WEIGHT: 5.03 LB
- 3- INSULATORS ARE RATED FOR 2700V, ARE UL RECOGNIZED TO UL STANDARD FOR SAFETY 891, AND MEET UL FLAMABILITY RATING 94 V-O.
- 4 - GROUND BUS CAN ACCOMMODATE UP TO (6)LUGS WITH 2 HOLES AT EITHER 1" CENTERS OR 5/8" CENTERS PLUS (6) LUGS FOR # 10 SCREW.

NO.	NOTE	DESCRIPTION	QTY
1	1305031416	COPPER BAR 4"	1
2	1305031411	BRACKET	2
3	3/8-16 x 3/4	STAINLESS STEEL HEX BOLT	4
4	3/8"	STAINLESS STEEL LOCK WASHER	4
5	1/4-20 x 3/4	STAINLESS STEEL HEX BOLT	12
6	1/4"	STAINLESS STEEL LOCK WASHER	12
7	1/4-20	STAINLESS STEEL HEX NUT	12
8	GLASTIC 2015-3D	INSULATOR 2700V	2



RÉV.	DESCRIPTION	DATE	APPR.
RÉVISIONS			

**ELECTRON METAL**  
A.I.G Inc.

**PROPRIETARY AND CONFIDENTIAL**  
THE INFORMATION CONTAINED IN THIS DRAWING IS THE SOLE PROPERTY OF A.I.G. ELECTRON METAL INC. ANY REPRODUCTION IN PART OR AS A WHOLE WITHOUT THE WRITTEN PERMISSION OF A.I.G. ELECTRON METAL INC IS PROHIBITED.

DRAWN BY:  
E.D.

CHECKED BY:  
E.D.

Title:  
**WALL MOUNT GROUND BUS 12 x 4**

PROJECT: Accessories\Electrical\MALT\Mural		FILE: BarreMALT4x12_1305031415_Eng			
PART NO.: ELEGWM-120404-TN	DRAWING NO.: 1305031415	REV.: -	SCALE: 1:4	DATE: 2012-08-21	SHEET: 1 / 1