

NO.	DESCRIPTION	QTY
1	FRAME 22 x 39.75 x 18	1
2	REAR SECTION (19 X 36.75)	1
3	PLEXI. DOOR (19 X 36.75)	1
4	MOUNTING RAIL (1.25") TAPPED 10-32	2
5	FRONT FEMALE HINGE	2
6	REAR MALE HINGE	2
7	4" FAN CUTOUT COVER PLATE	4
8	THREAD ROLLING PAN HEAD - PHILLIPS	10
9	LINK ROTARY LATCH, MEDIUM	2
10	KEEPER	2
11	CLEVIS PIN 3/8 x 3/4	2
12	HAIRPIN COTTER PIN 1-1/4"	2

NOTES:

1 - CAPACITY: 150 LB

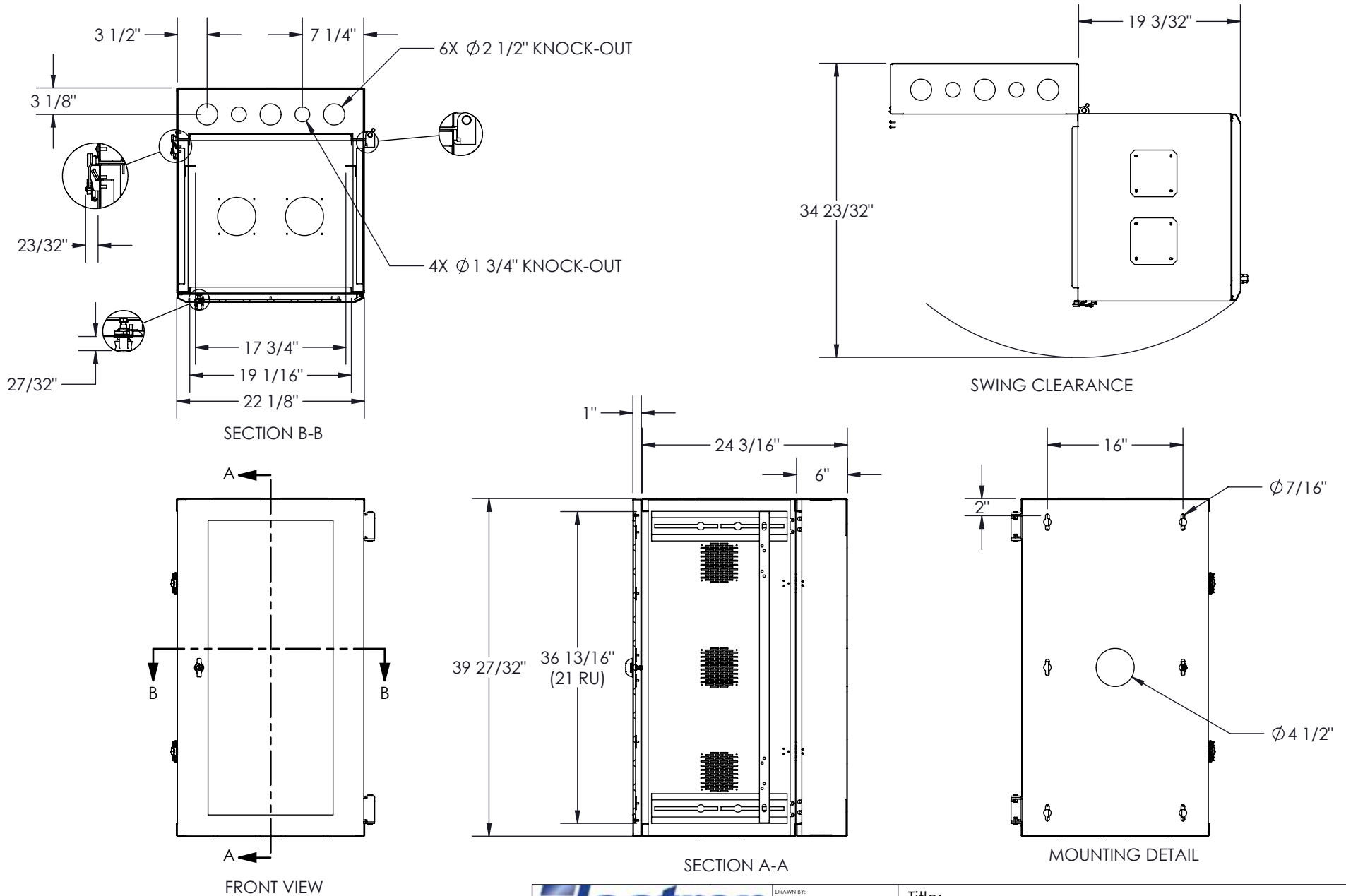
2 - WEIGHT: 130 LB

3 - CABINET IS FULLY REVERSIBLE LH OR RH SWING.



**PROPRIETARY AND CONFIDENTIAL**  
 THE INFORMATION CONTAINED IN THIS DRAWING IS THE SOLE PROPERTY OF A.I.G. ELECTRON METAL INC. ANY REPRODUCTION IN PART OR AS A WHOLE WITHOUT THE WRITTEN PERMISSION OF A.I.G. ELECTRON METAL INC IS PROHIBITED.

DRAWN BY: TOM		Title: WALL MOUNT CABINET (19 x 36.75) x 24 REVERSED				
CHECKED BY: TOM						
PROJECT: WallMount\Cabinet2013\Ensembles			FILE: Cabinet19x36x24_1305031356_Eng			
PART NO.:	DRAWING NO.:	REV.:	SCALE:	DATE:	SHEET:	
WMCRE1-192124	1305031356	B	1:14	2012-06-12	1 / 2	



**PROPRIETARY AND CONFIDENTIAL**  
 THE INFORMATION CONTAINED IN THIS DRAWING IS THE SOLE PROPERTY OF A.I.G. ELECTRON METAL INC. ANY REPRODUCTION IN PART OR AS A WHOLE WITHOUT THE WRITTEN PERMISSION OF A.I.G. ELECTRON METAL INC IS PROHIBITED.

DRAWN BY: TOM		Title: WALL MOUNT CABINET (19 x 36.75) x 24 REVERSED				
CHECKED BY: TOM		PROJECT: WallMount\Cabinet2013\Ensembles			FILE: Cabinet19x36x24_1305031356_Eng	
PART NO.:	DRAWING NO.:	REV.:	SCALE:	DATE:	SHEET:	
WMCRE1-192124	1305031356	B	1:16	2012-06-12	2 / 2	