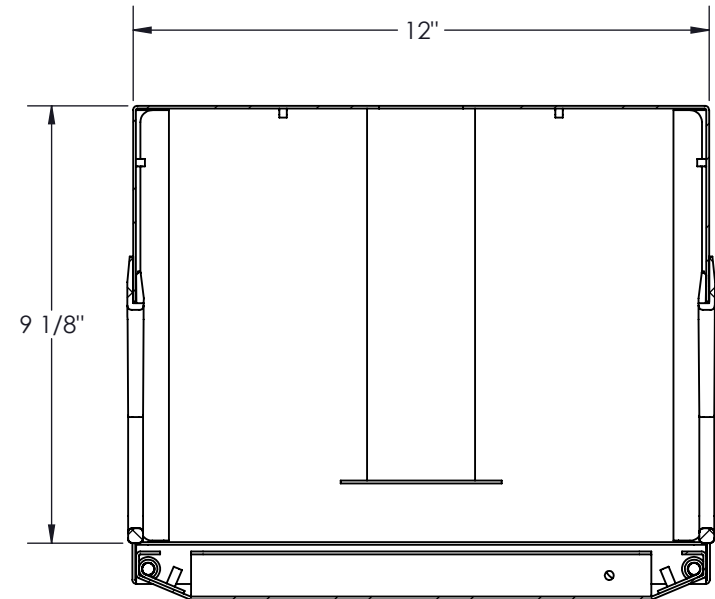



NO.	NOTE	DESCRIPTION	QTY
1	2183-002 - 12 x 9	BODY 48RU (84)	1
2	1284-002	2 WAY BEVELLED DOOR 48RU 12 x (84)	1
3	1305020805 - 7.75"	SPOOL BRACKET	8
4	1305020804 - 3.5"	SPOOL END PLATE	8
5	1305020806 - 7.75"	SPOOL	8
6	1305038739 - 8.75"	PLASTIC CABLE MGT FINGERS	18
7	1305038739 - 3.5"	PLASTIC CABLE MGT FINGERS	2



SECTION B-B  
SCALE 1 : 4

RÉV.	DESCRIPTION	DATE	APPR.	INV.
RÉVISIONS				

 <p>PROUDLY MANUFACTURED IN CANADA.</p> <p><b>PROPRIETARY AND CONFIDENTIAL</b> THE INFORMATION CONTAINED IN THIS DRAWING IS THE SOLE PROPERTY OF A.I.G. ELECTRON METAL INC. ANY REPRODUCTION IN PART OR AS A WHOLE WITHOUT THE WRITTEN PERMISSION OF A.I.G. ELECTRON METAL INC IS PROHIBITED.</p>	DRAWN BY: E.D.	Title: HIGH DENSITY CABLE MGT 12 x (84) x 9 WITH DOOR			
	CHECKED BY: E.D.				
PROJECT: G:\SWDwgr\CableMgt\CableMgt_Racks\HighDensityPlastic\Simple\Ensembles\	FILE: GestHD12x84x9AvecPorte_2184-001_Eng				
PART NO.: CMRHSD-124809	DRAWING NO.: 2184-001	REV.: -	SCALE: 1:16	DATE: 2018-02-02	SHEET: 1 / 1